

DRC AGRICULTURAL BUSINESS PARKS INITIATIVE

**AN INTEGRATED STRATEGY TO UNLEASH ECONOMIC DEVELOPMENT AND
ADDRESS FOOD INSECURITY IN DRC AND BEYOND**

John M. Ulimwengu, PhD

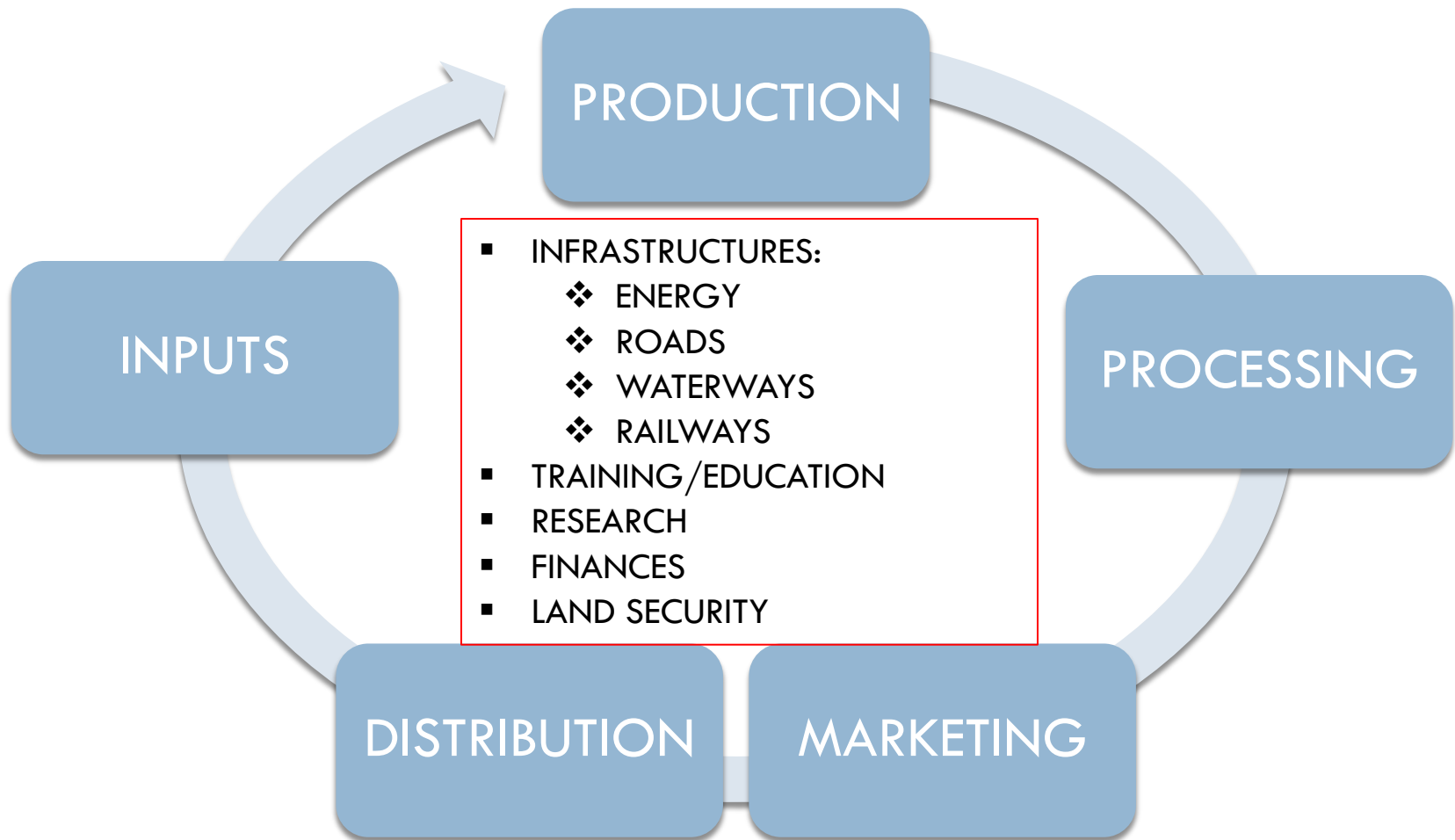
Senior Advisor

(Office of the DRC Prime Minister)

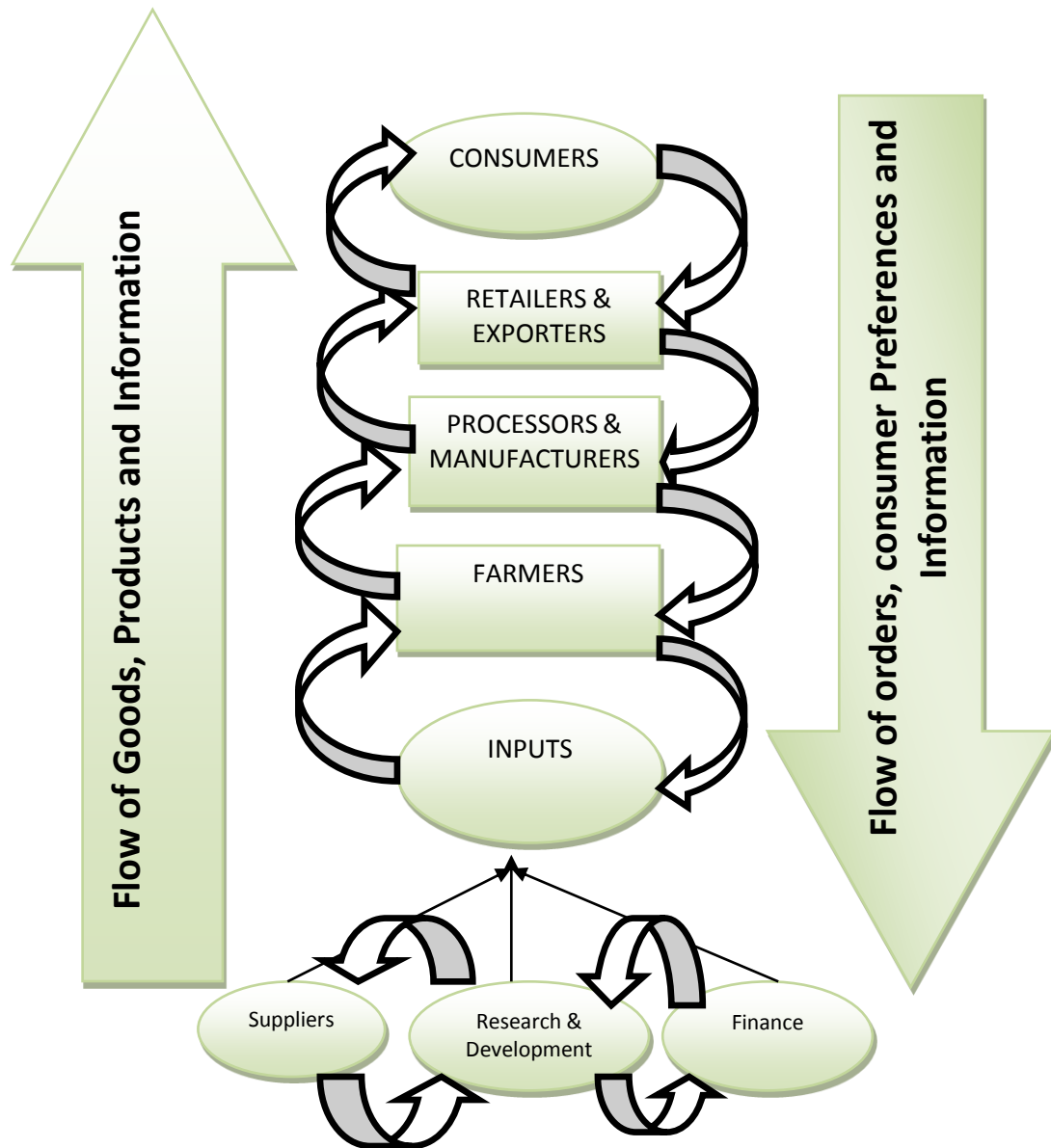
Time to Unleash Agricultural Potential

- 80 million hectares (ha) of arable land, of which 4 million are irrigable;
- Climatic diversity and abundant water that enable two annual harvests of a wide variety of crops;
- Pasture resources that could support an estimated 40 million cattle or equivalent;
- Inland fishery resources that could allow an annual supply of some 700,000 tons.

A HOLISTIC APPROACH



From farm to fork: the complete value chain

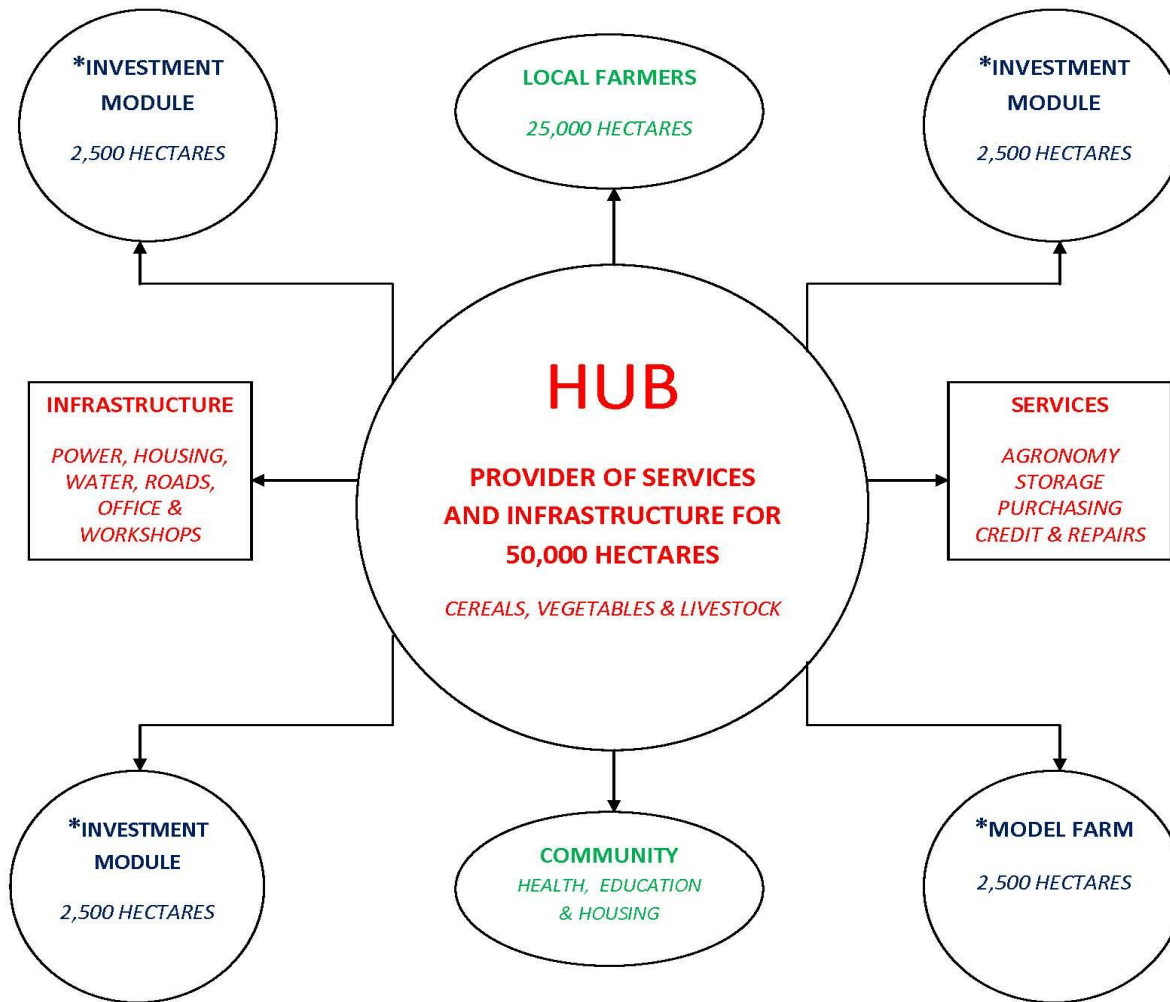


The key to a successful agricultural sector is knitting the value chain together

- **Inputs**
Seed & seedlings, fertilizer & pesticide
- **Farmers & Cooperatives**
Training, financing, market for goods
- **Agri-processors**
Financing (working capital & capital investment)
- **Logistics**
Warehousing, ports, roads, railways, border crossing
- **Traders & retailers**
Financing (inventory & pre-export)
- **Exporters & off takers**
Financing (inventory & pre-export)

Agricultural Business Park: Economic Special Zones

5

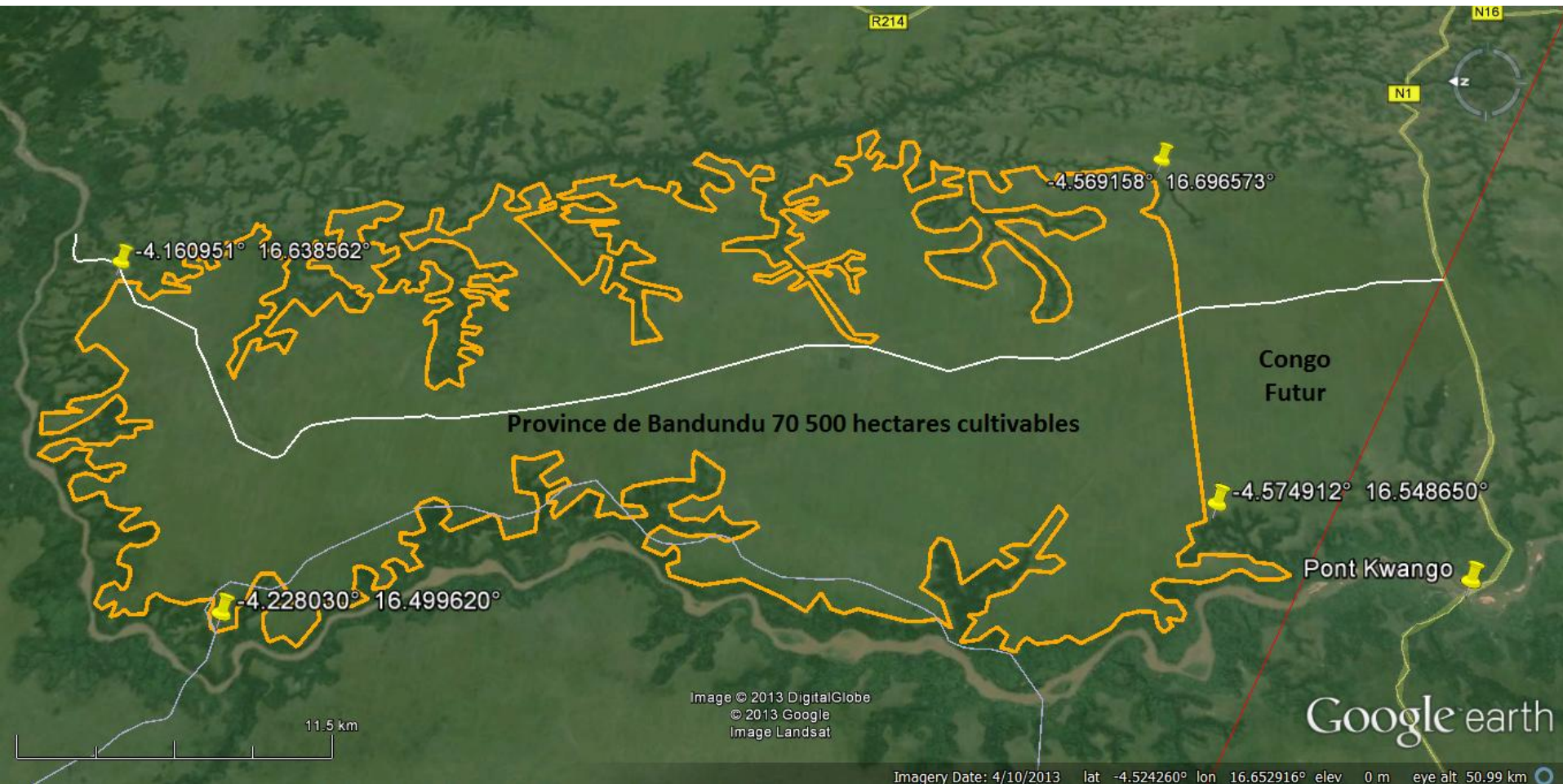


*Ten investment modules including the model farm would be planned for a total of 25,000 hectares for outside investors.

Geographical distribution of the sites



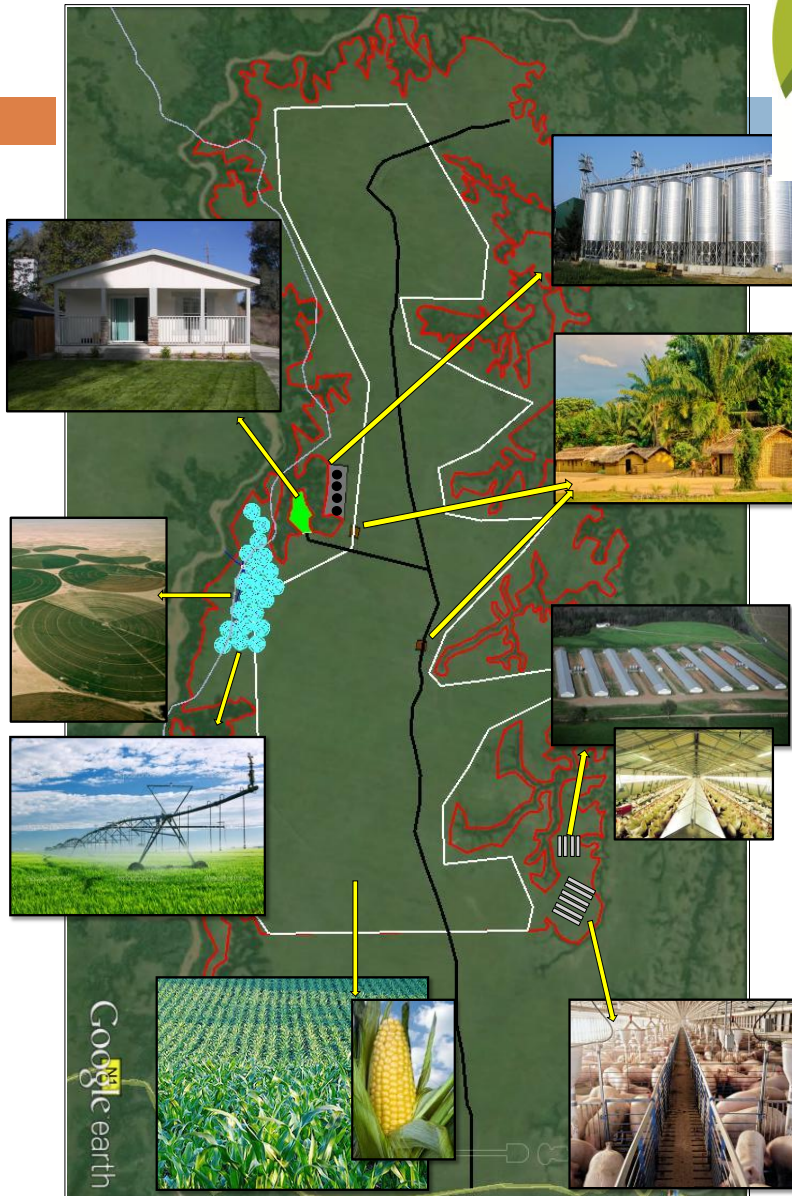
First Commercial ABP: Bukanga Lonzo





parc agro industriel de Bukanga-Lonzo

www.parcagro.com



- ❑ Phase I (53 million USD + 30 million USD for electricity) :
 - ◆ Grains (Maize, soybeans, beans) production (10.000-50.000 ha)
- ❑ Phase IIA (100 million USD):
 - ◆ Vegetables production (Irrigated 1000);
 - ◆ Expected production: 500 tonnes/day
- ❑ Phase IIB (120 million USD):
 - ◆ Livestock (Eggs, chicken, fish and pork).
 - ◆ Expected production: 40,000-45,000 slaughtered chicken per day; 470 tons of pork meat per year.
- ❑ Fresh Produce Wholesale Market (100 million USD)

NEXT 2 YEARS



- ❑ DEVELOPMENT CORRIDOR IN EASTERN DRC INCLUDING ABP IN RUZIZI;
- ❑ ABP AROUND SUGAR CANE INDUSTRY IN BANDUNDU
- ❑ ABPs FOR EXPORT CROPS (COFFEE, COCAO, etc.) IN EQUATEUR AND NORD KIVU

This Is A Call for Partnerships

- <http://online.wsj.com/articles/congo-plans-to-lease-farmland-in-bid-to-bolster-food-productivity-1414506517>
- **Congo Seeks Investors for Farmland Bigger Than France**
- **African Country Seeks to Attract Capital and Technology to Bolster Jobs, Food Production**